

COMMON BUCKTHORN

Rhamnus cathartica

PERENNIAL LIFECYCLE & TREATMENT TIMING

www.mda.state.mn.us/weedcontrol

Fruit development
(female trees only)

Seed dispersal

Germinating seed

Dormancy

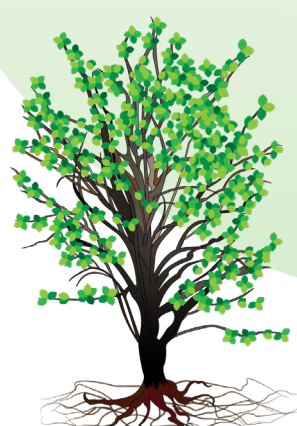
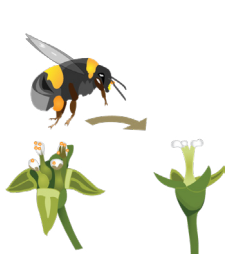
Seedling

Sapling

Leaf out

Flowering

Pollination



-  **ROOT WRENCH**
Attach root wrench to sapling and pull roots out.
-  **HERBICIDE**
Foliar spray leaves, and lower 18" of bark with herbicide.
-  **CUT AND TREAT**
Cut shrub at the base and spray outer rings.
-  **FORESTRY MOW**
Cut, grind and clear vegetation. Follow up with other treatments.
-  **PRESCRIBED FIRE**
Burn seedlings and saplings
-  **GRAZING**
Goats or sheep eat foliage and bark.
-  **Monitoring and repeated management is necessary for long term control of established infestations.**